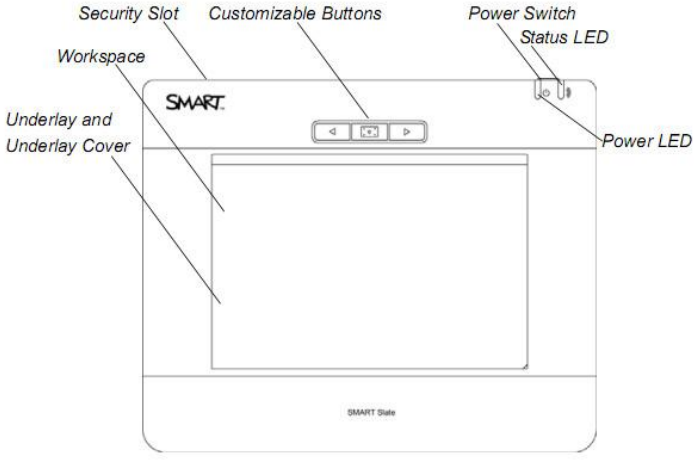
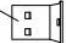
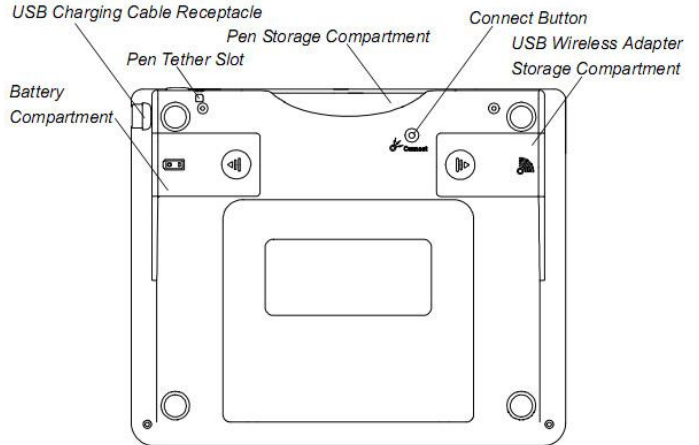


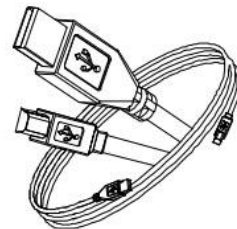
SMART Slate WS200

The SMART slate is a remote mouse which connects via Bluetooth, wirelessly to your computer to perform normal computer operations from a distance of 32' (10M).. It integrates well with the Smart Technologies Notebook software and interactive whiteboard, allowing you to write notes, use programs remotely. You can use the slate with and without the SMART Notebook software.

<ul style="list-style-type: none"> • The Power switch is on the top right side. • Power LED tells is the unit is charging or on. • Status LED on upper right: <ul style="list-style-type: none"> ▪ Amber: off line ▪ Flashing Green: Connecting ▪ Pale green: online • One can place under lays to assist navigation • You can use a Kensington Security Slot to lock the slate. 	
<ul style="list-style-type: none"> • Charges by connecting USB charging cable • You can use the pen storage compartment to store the pen when not in use. • Storage compartment on the back of the slate stores the USB Bluetooth wireless adaptor when not in use.  • Connect button on bottom of Slate used to sync slate to computer. 	

USB Charging Cable

You can charge your slate by connecting it to your computer with the USB charging cable. Your slate comes with an installed lithium ion battery. It takes six hours to fully charge the battery, which lasts for more than 24 hours.



Connecting Slate using Your USB Bluetooth Wireless Adaptor

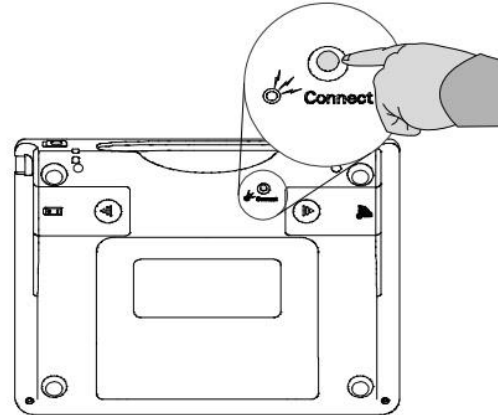
Your slate comes with a USB Bluetooth wireless adaptor.



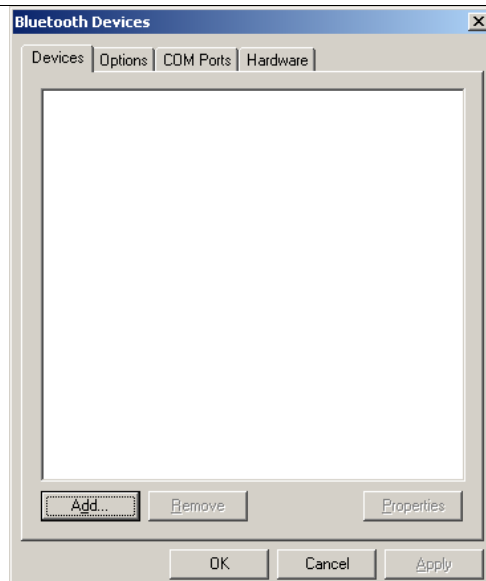
- Connect the USB Bluetooth wireless adaptor to your computer's USB receptacle.
- Slide the power switch to the on position if your Slate is configured and the status LED is pale green you can jump to the next section.


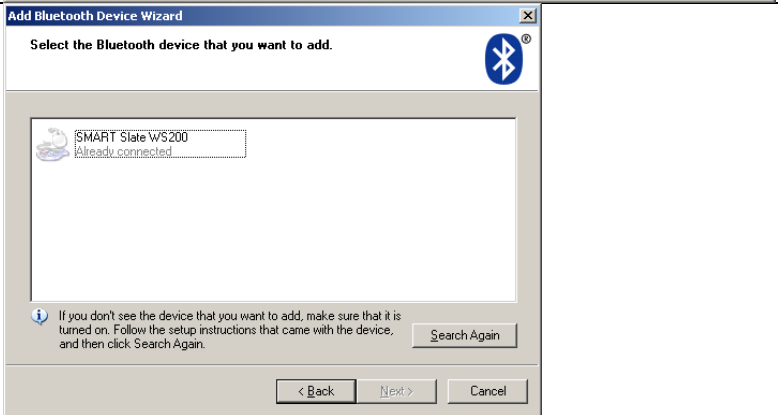
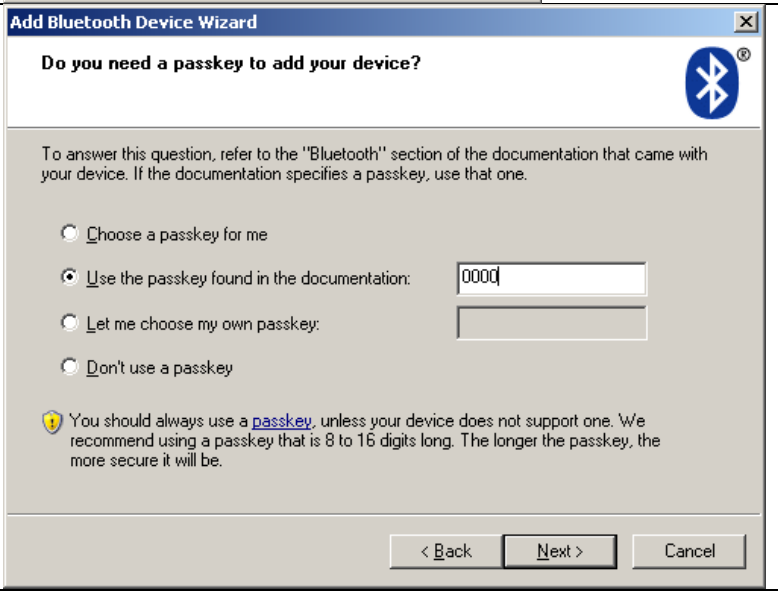
Slate status LED is amber i.e. offline.

- Press the Connect button on the back of the slate to start sync process.
- The status LED on the slate blinks green.



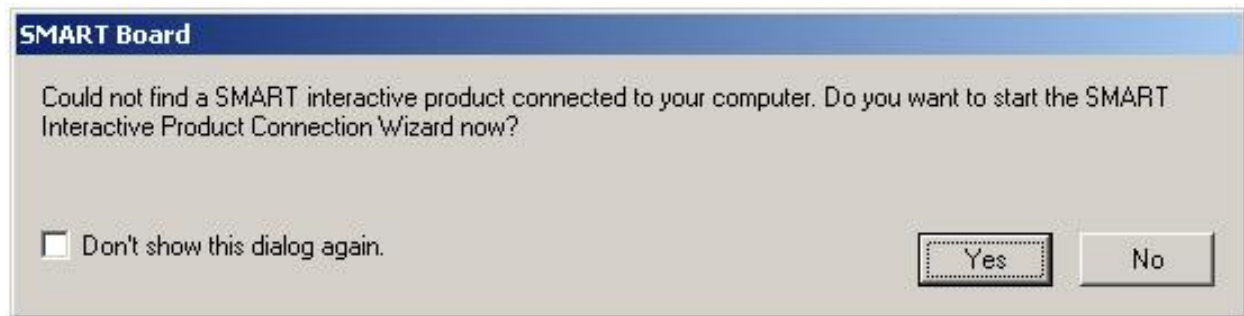
- On the computer open the Bluetooth Devices control panel. (Start → Settings → control panel)
- Click add



<ul style="list-style-type: none"> • Check the “My device is set up and ready to be found box. • Click next 	
<ul style="list-style-type: none"> • After the search is complete select SMART Slate WS200 • Click next 	
<ul style="list-style-type: none"> • Select “use the passkey found in documentation: • Enter 0000 • Click next • Click Finish 	
<p>When your slate is wireless connected to your computer, the status LED stops blinking green and glows pale green.</p> <p>Your slate is now connected and ready to use.</p>	

Using the Pen

When machines are added to the SMART Board OU by the technology team (X5055) the SMART Board tools are installed to auto launched at start up. This will look for a SMART Board and give an error if one is not found.



You can check "Don't show this dialog again" to not see the error again.

The pen controls the pointer on your display like a mouse. Hold/hover the pen tip a few millimeters above the Slate surface. You can hold the pen tip next to your middle finger and slide your finger on the surface. Sliding up/down right/left moves the pointer appropriately. Note the Slate has become a mirror of your screen. The corners of the Slate surface correspond to the corners of your display.

Left Click is performed by touching the surface.

Right Click is performed by pressing the upper rocker switch, releasing and touching the surface.

Write Digital ink. Pressing the lower rocker switch and touching surface and sliding writes digital ink.




When you are writing digital ink the above window appears. It is used with ink aware applications (word, excel and others). The left icon (+ with pen) saves your marks to the document (+ with N) converts your notation to text in the document. The camera does some amazing things. Settings tells you how your pen is set.

Erase digital ink Flip pen upside down and touch and slide pen on the surface.

SMART Board Tools

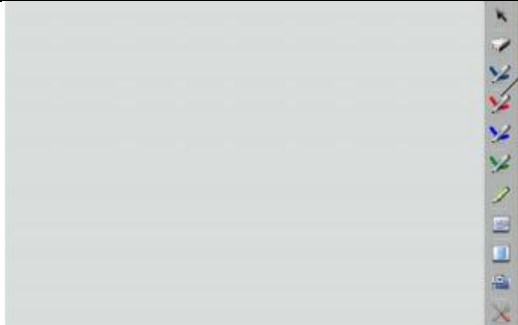
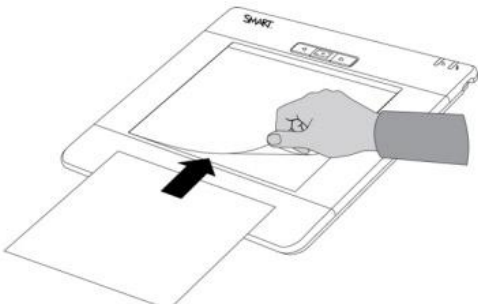
On the edge of your screen is the SMART Board Tools bar Icon stack. If you do not have it open Start menu → Programs → SMART technologies → SMART Board Drivers → Smart Board Tools.

	<p>On the left hand side of your screen is the SMART Board tool bar. The top icon is the default and the pen works as described above.</p> <p>Pen with Black switches pen to always write black.</p> <p>Pen with Red switches pen to always write red.</p> <p>Pen that's Yellow switches pen to a highlighter.</p> <p>Eraser switches pen to an eraser.</p> <p>Mouse makes next touch of screen a right click</p> <p>Notebook and pen launches notebook software.</p> <p>Keyboard brings up a pen touch keyboard.</p> <p>Circle arrow CCW is the undo icon</p> <p>Gear allows you to customize the icons available on the tool bar.</p> <p>Double triangle icon on the right of the tool bar hides the tools.</p>
-----------------------------------------------------------------------------------	------------------------------------------------------------------------------------------------------------------------------------------------------------------------------------------------------------------------------------------------------------------------------------------------------------------------------------------------------------------------------------------------------------------------------------------------------------------------------------------------------------------------------------------------------------------------------------------------------------------------------------------------------------------------------------------------------------------------------------------------------------------------------------------------

Above the slate surface are **three buttons**: Center one opens the Notebook software. The left and right buttons page back and forward in SMART notebook software.

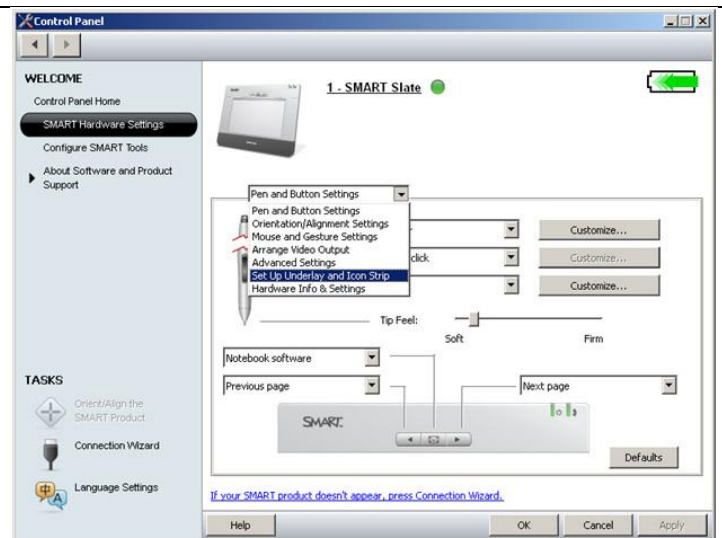
The SMART Board Tools are on the right hand side of the slate work surface.

Paper underlays

<p>An underlay is a print out with an icon strip that is placed under the underlay cover on the slate.</p>	 <p>Icon Strip</p>
<p>To install underlay</p> <ul style="list-style-type: none"> Trim the excess paper from the edges List the underlay cover from lower right Slide underlay beneath underlay cover 	

Printing underlays

- Open the Smart Board Control Panel (Start→Settings→Control Panel→Smart Board)
- Select “Smart Hardware Settings” on the left
- Then from the drop down select “Setup Underlay and Icon Strip”



On the next screen click print at the lower right. Verify your printing preference is landscape orientation.

Change how slate surface maps to display(s)

By default the slate surface represents your entire display. If you run in extended display mode you can set your slate to control one or the other. In extended display mode you will have “desktop” on your monitor and more “Desktop” on the projector. Using this, students could run something as you see something else on the local monitor.

- Open the Smart Board control panel (start→Settings→Control panel→Smart Board).
- Select “Smart Hardware Settings” on the left. (See image above)
- Then from the drop down select “Orientation/Alignment settings”.
- Then select “Display 1”, “Display 2”, or “Entire Surface”.
- Click apply

Final thoughts

If you need technical assistance please call your building technologist.

This document was based on an online manual for SMART Slate at <http://www2.smarttech.com/kbdoc/140795>

Chapter 4 talks more about customizing your slate. However adding customizations means that a default slate i.e. someone’s else’s , will act differently.